

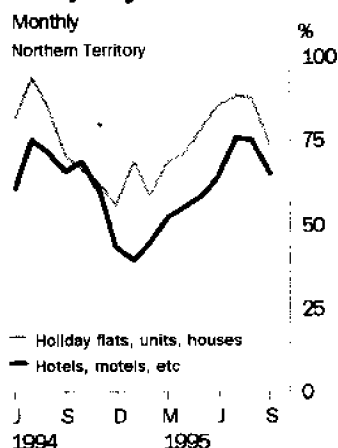
TOURIST ACCOMMODATION

NORTHERN TERRITORY

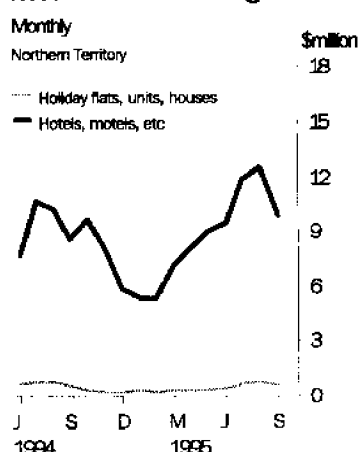
EMBARGOED UNTIL 11:30AM THURS 14 DECEMBER 1995

SEPTEMBER QTR KEY FIGURES

Occupancy rates



Accommodation takings



	Sep 94	Sep 95	change
Hotels, Motels and Guest Houses			
Rooms available (No.)	5 322	5 615	5.5 %
Room occupancy rate (%)	71.0	72.1	1.1 pts
Takings from accommodation (\$'000)	29 377	34 185	16.4 %
Holiday Flats, Units and Houses			
Units, etc. available (No.)	318	290	-8.8 %
Unit occupancy rate (%)	83.2	83.3	0.1 pts
Takings from accommodation (\$'000)	2 097	1 941	-7.4 %
Caravan Parks			
Sites, cabins, etc. available (No.)	9 198	9 025	-1.9 %
Site occupancy rate (%)	43.3	40.6	-2.7 pts
Takings from accommodation (\$'000)	4 735	4 807	1.5 %
Visitor Hostels			
Bed spaces available (No.)	2 794	2 953	5.7 %
Bed occupancy rate (%)	61.8	62.8	1.0 pts
Takings from accommodation (\$'000)	1 964	2 274	15.8 %

SEPTEMBER QTR KEY POINTS

QUARTERLY OCCUPANCY RATES HISTORICALLY HIGH

- For hotels, motels and guest houses, the room occupancy rate at 72.1% was the highest for any quarter since 73.7% was recorded for September quarter 1985.
- The occupancy rate of 83.3% for holiday flats, units and houses was the highest achieved for any quarter since this accommodation type was included in the Survey in 1987. Similarly, the 62.8% bed occupancy rate for visitor hostels was the highest recorded since hostels were brought into scope of the collection in 1991.
- For caravan parks, the site occupancy rate fell to 40.6% compared with the 43.3% recorded in September quarter 1994, but was otherwise the highest rate achieved since September quarter 1987.

QUARTERLY ACCOMMODATION TAKINGS

- Compared with September quarter 1994, takings from accommodation in hotels, motels and guest houses increased by 16.4% to \$34.2m, while room nights occupied increased by 7.2%.
- Visitor hostels recorded a 15.8% takings increase to \$2.3m compared with an 8.3% increase in guest nights sold, while caravan park takings rose by 1.5% to \$4.8m despite an 8.0% fall in site nights occupied.
- For holiday flats, units and houses, takings fell by 7.4%, consistent with an 8.8% decrease in capacity available, predominantly due to reclassification of holiday units as motels.

INQUIRIES

- For further information about these and related statistics, contact Brian Hay on 07 3222 6129, or any ABS Office.

NOTES

FORTHCOMING ISSUES

ISSUE (Quarter)

EXPECTED RELEASE DATE

December 1995

7 March 1996

CHANGES IN THIS ISSUE

There are no changes in this issue.

BOB HARRISON

Statistician, Northern Territory

TABLE 1 — SUMMARY OF HOTELS, MOTELS AND GUEST HOUSES WITH FACILITIES, NORTHERN TERRITORY

Particulars	Unit	Quarter ended				Year ended			
		June 1994	September 1994	December 1994	March 1995	June 1995	September 1995	September 1994	September 1995
LICENSED HOTELS WITH FACILITIES									
Establishments	No.	29	30	30	30	31	31
Guest rooms	No.	1,993	2,031	2,032	2,032	2,045	2,044
Bed spaces	No.	5,645	5,886	5,873	5,849	5,878	5,837
Employment (persons)	No.	1,881	2,066	1,952	2,000	2,244	2,226
Room nights occupied	No.	113,400	137,369	122,652	93,795	121,953	144,868	441,209	483,268
Room occupancy rate	per cent	62.5	73.5	65.6	51.3	65.5	77.0	60.3	65.0
Guest nights	No.	182,957	227,256	200,595	149,737	199,918	243,845	724,118	794,095
Bed occupancy rate	per cent	35.6	42.0	37.1	28.4	37.4	45.4	34.8	37.1
Guest arrivals	No.	87,978	114,318	99,972	80,933	97,509	127,882	372,837	406,296
Average length of stay	days	2.1	2.0	2.0	1.9	2.1	1.9	1.9	2.0
Takings from accommodation	\$'000	11,321	14,426	12,396	9,292	13,691	17,058	44,388	52,436
MOTELS AND GUEST HOUSES WITH FACILITIES									
Establishments	No.	64	63	65	65	65	67
Guest rooms	No.	3,283	3,291	3,397	3,411	3,429	3,571
Bed spaces	No.	9,578	9,582	10,026	10,032	10,088	10,572
Employment (persons)	No.	1,175	1,177	1,095	1,120	1,283	1,317
Room nights occupied	No.	161,234	210,085	162,597	127,843	172,961	227,605	632,701	691,006
Room occupancy rate	per cent	54.0	69.4	52.0	41.8	55.4	69.3	52.8	54.9
Guest nights	No.	285,112	386,914	282,297	227,676	317,490	435,154	1,109,844	1,262,617
Bed occupancy rate	per cent	32.7	43.9	30.6	25.3	34.6	44.7	31.9	34.0
Guest arrivals	No.	133,555	185,131	131,923	105,564	153,439	210,282	540,547	601,208
Average length of stay	days	2.1	2.1	2.1	2.2	2.1	2.1	2.1	2.1
Takings from accommodation	\$'000	10,872	14,951	11,078	8,421	12,816	17,127	42,189	49,442
TOTAL HOTELS, MOTELS AND GUEST HOUSES WITH FACILITIES									
Establishments	No.	93	93	95	95	96	98
Guest rooms	No.	5,276	5,322	5,429	5,443	5,474	5,615
Bed spaces	No.	15,223	15,468	15,899	15,881	15,966	16,409
Employment (persons)	No.	3,056	3,243	3,047	3,120	3,527	3,543
Room nights occupied	No.	274,634	347,454	285,249	221,638	294,914	372,473	1,073,910	1,174,274
Room occupancy rate	per cent	57.2	71.0	57.1	45.3	59.2	72.1	55.6	58.6
Guest nights	No.	468,069	614,170	482,892	377,413	517,408	678,999	1,833,962	2,056,712
Bed occupancy rate	per cent	33.8	43.2	33.0	26.5	35.6	45.0	33.0	35.1
Guest arrivals	No.	221,533	299,449	231,895	186,497	250,948	338,164	913,384	1,007,504
Average length of stay	days	2.1	2.1	2.1	2.0	2.1	2.0	2.0	2.0
Takings from accommodation	\$'000	22,193	29,377	23,474	17,713	26,507	34,185	86,577	101,879

TABLE 2 — SUMMARY OF CARAVAN PARKS, NORTHERN TERRITORY

Particulars	Unit	Quarter ended					Year ended				
		June	September	December	March	June	September	September	September		
		1994	1994	1994	1995	1995	1995	1994	1995		
SHORT-TERM CARAVAN PARKS (a)											
Establishments	No.	56	63	62	61	60	60		
Capacity											
On-site vans	No.	61	112	119	122	122	123		
Other powered sites	No.	2,583	2,989	2,981	2,883	2,905	2,886		
Unpowered sites	No.	3,067	3,452	3,445	3,479	3,555	3,337		
Cabins, etc.	No.	162	183	179	189	167	194		
<i>Total capacity</i>	<i>No.</i>	<i>5,873</i>	<i>6,736</i>	<i>6,724</i>	<i>6,673</i>	<i>6,749</i>	<i>6,540</i>		
Sites occupied by long-term guests	No.	199	302	290	300	308	296		
Other sites permanently reserved	No.	2	1	2	3	5	4		
Employment (persons)	No.	243	269	222	232	268	328		
Site nights occupied	No.	146,708	250,668	88,457	60,866	194,525	225,256	507,587	569,104		
Site occupancy rate	per cent	27.5	40.5	14.3	10.1	31.7	37.4	22.8	23.4		
Takings from accommodation	\$'000	2,188	3,498	1,284	871	2,700	3,553	7,301	8,407		
LONG-TERM CARAVAN PARKS (a)											
Establishments	No.	25	20	20	20	18	18		
Capacity											
On-site vans	No.	249	209	206	200	189	198		
Other powered sites	No.	1,872	1,557	1,565	1,585	1,539	1,556		
Unpowered sites	No.	771	622	636	632	642	646		
Cabins, etc.	No.	76	74	78	82	85	85		
<i>Total capacity</i>	<i>No.</i>	<i>2,968</i>	<i>2,462</i>	<i>2,485</i>	<i>2,499</i>	<i>2,455</i>	<i>2,485</i>		
Sites occupied by long-term guests	No.	922	829	770	761	709	702		
Other sites permanently reserved	No.	7	4	3	1	1	1		
Employment (persons)	No.	92	69	73	71	73	78		
Site nights occupied	No.	129,418	115,495	86,626	78,102	93,092	111,780	441,741	369,600		
Site occupancy rate	per cent	47.9	51.0	37.9	34.7	41.7	48.9	42.3	40.8		
Takings from accommodation	\$'000	1,385	1,238	842	768	1,013	1,254	4,541	3,877		
TOTAL CARAVAN PARKS											
Establishments	No.	81	83	82	81	78	78		
Capacity											
On-site vans	No.	310	321	325	322	311	321		
Other powered sites	No.	4,455	4,546	4,546	4,468	4,444	4,442		
Unpowered sites	No.	3,838	4,074	4,081	4,111	4,197	3,983		
Cabins, etc.	No.	238	257	257	271	252	279		
<i>Total capacity</i>	<i>No.</i>	<i>8,841</i>	<i>9,198</i>	<i>9,209</i>	<i>9,172</i>	<i>9,204</i>	<i>9,025</i>		
Sites occupied by long-term guests	No.	1,121	1,131	1,060	1,061	1,017	998		
Other sites permanently reserved	No.	9	5	5	4	6	5		
Employment (persons)	No.	335	338	295	303	341	406		
Site nights occupied	No.	276,126	366,163	175,083	138,968	287,617	337,036	949,328	938,704		
Site occupancy rate	per cent	34.4	43.3	20.7	16.8	34.3	40.6	29.1	28.1		
Takings from accommodation	\$'000	3,573	4,735	2,126	1,638	3,712	4,807	11,842	12,284		

(a) A review of the occupancy of individual caravan parks resulted in reclassification in September quarter 1994 of a net 5 parks from predominantly long-term to predominantly short-term.

TABLE 3 — SUMMARY OF HOLIDAY FLATS, UNITS AND HOUSES, NORTHERN TERRITORY (a)

Particulars	Unit	Quarter ended				Year ended			
		June 1994	September 1994	December 1994	March 1995	June 1995	September 1995	September 1994	September 1995
Letting entities	No.	11	10	8	8	7	10
Flats, units and houses									
Single bedroom	No.	167	166	126	126	102	145
Multiple bedroom	No.	157	152	97	98	97	145
<i>Total flats, units and houses</i>	<i>No.</i>	<i>324</i>	<i>318</i>	<i>223</i>	<i>224</i>	<i>199</i>	<i>290</i>	<i>..</i>	<i>..</i>
Bed spaces	No.	1,267	1,224	891	884	800	1,147
Employment (persons) (b)	No.	82	70	46	48	46	64
Unit nights occupied	No.	21,597	24,344	12,581	13,207	14,178	22,216	74,000	62,182
Unit occupancy rate	per cent	73.2	83.2	61.3	65.5	78.3	83.3	71.2	72.8
Unit lettings	No.	5,143	6,280	2,927	2,411	2,867	5,196	19,150	13,401
Average length of stay	days	4.2	3.9	4.3	5.5	4.9	4.3	3.9	4.6
Takings from accommodation	\$'000	1,737	2,097	789	849	1,141	1,941	5,703	4,720

(a) From December quarter 1994 and June quarter 1995 respectively, some accommodation previously classified as holiday flats and units has been included as motel accommodation. (b) Employment numbers exclude real estate agents and their employees.

TABLE 4 — SUMMARY OF VISITOR HOSTELS, NORTHERN TERRITORY

Particulars	Unit	Quarter ended				Year ended			
		June 1994	September 1994	December 1994	March 1995	June 1995	September 1995	September 1994	September 1995
Establishments	No.	36	35	35	34	36	34
Bed spaces	No.	2,776	2,794	2,740	2,598	2,981	2,953
Employment (persons)	No.	168	149	134	139	165	171
Guest nights	No.	130,561	157,099	109,376	94,127	140,770	170,211	504,679	514,484
Bed occupancy rate	per cent	52.2	61.8	43.4	40.3	53.6	62.8	48.4	50.5
Guest arrivals	No.	66,572	67,389	51,221	46,020	65,256	92,148	236,583	254,645
Average length of stay	days	2.0	2.3	2.1	2.0	2.2	1.8	2.1	2.0
Takings from accommodation	\$'000	1,662	1,964	1,394	1,175	1,857	2,274	6,341	6,700

TABLE 5 — HOTELS, MOTELS AND GUEST HOUSES WITH FACILITIES BY ESTABLISHMENT SIZE,
NORTHERN TERRITORY

Particulars	Establishment size (number of rooms)						Northern Territory
	5-9	10-15	16-25	26-50	51-100	101+	
ESTABLISHMENTS, CAPACITY AND EMPLOYMENT							
<i>September quarter 1994</i>							
Establishments	6	8	21	19	25	14	93
Guest rooms	40	101	434	706	1,866	2,175	5,322
Bed spaces	115	292	1,353	2,083	5,146	6,479	15,468
Employment (persons)	35	101	203	472	968	1,464	3,243
<i>September quarter 1995</i>							
Establishments	7	7	23	20	27	14	98
Guest rooms	46	86	478	760	2,075	2,170	5,615
Bed spaces	145	263	1,462	2,300	5,897	6,342	16,409
Employment (persons)	40	106	237	528	1,234	1,398	3,543
ROOM NIGHTS OCCUPIED							
<i>September quarter 1994</i>	1,201	5,846	24,679	40,706	115,469	159,553	347,454
<i>1995—</i>							
July	465	1,806	9,683	16,866	46,925	55,864	131,609
August	400	1,584	9,607	16,433	45,393	57,834	131,251
September	357	1,230	7,753	12,928	37,933	49,412	109,613
<i>September quarter 1995</i>	1,222	4,620	27,043	46,227	130,251	163,110	372,473
ROOM OCCUPANCY RATES (per cent)							
<i>September quarter 1994</i>	32.6	62.9	61.8	62.7	67.3	79.7	71.0
<i>1995—</i>							
July	32.6	67.7	65.3	71.6	72.9	83.0	75.6
August	28.1	59.4	64.8	69.7	70.6	86.0	75.4
September	25.9	47.7	54.1	56.7	60.9	75.9	65.1
<i>September quarter 1995</i>	28.9	58.4	61.5	66.1	68.2	81.7	72.1
GUEST NIGHTS							
<i>September quarter 1994</i>	2,185	9,888	46,068	73,718	210,429	271,882	614,170
<i>1995—</i>							
July	747	3,355	17,054	34,373	90,009	100,945	246,483
August	595	2,723	16,114	31,192	85,268	100,782	236,674
September	556	2,129	13,218	23,374	71,558	85,007	195,842
<i>September quarter 1995</i>	1,898	8,207	46,386	88,939	246,835	286,734	678,999
BED OCCUPANCY RATES (per cent)							
<i>September quarter 1994</i>	20.7	36.8	37.0	38.5	44.4	45.6	43.2
<i>1995—</i>							
July	16.6	41.2	37.6	48.2	49.2	51.3	48.5
August	13.2	33.4	35.6	43.7	46.6	51.3	46.5
September	12.8	27.0	30.1	33.9	40.4	44.7	39.8
<i>September quarter 1995</i>	14.2	33.9	34.5	42.0	45.5	49.1	45.0
GUEST ARRIVALS							
<i>September quarter 1994</i>	1,982	6,511	18,401	37,580	101,144	133,831	299,449
<i>1995—</i>							
July	674	2,994	8,087	18,908	41,935	49,852	122,450
August	535	2,207	7,486	17,128	41,007	52,030	120,393
September	528	1,961	5,551	12,059	31,640	43,582	95,321
<i>September quarter 1995</i>	1,737	7,162	21,124	48,095	114,582	145,464	338,164
AVERAGE LENGTH OF STAY (days)							
<i>September quarter 1994</i>	1.1	1.5	2.5	2.0	2.1	2.0	2.1
<i>September quarter 1995</i>	1.1	1.1	2.2	1.8	2.2	2.0	2.0
TAKINGS FROM ACCOMMODATION (\$'000)							
<i>September quarter 1994</i>	55	306	1,363	2,594	8,381	16,678	29,377
<i>1995—</i>							
July	22	110	578	1,257	3,339	6,513	11,818
August	18	96	575	1,220	3,568	7,008	12,484
September	16	69	462	969	2,879	5,489	9,883
<i>September quarter 1995</i>	57	274	1,615	3,445	9,785	19,009	34,185

TABLE 6A — HOTELS, MOTELS AND GUEST HOUSES WITH FACILITIES BY STAR GRADING BY STATISTICAL DIVISION,
NORTHERN TERRITORY

Particulars	Darwin (SD)				Northern Territory - Balance (SD)			
	Star grading			Total	Star grading			Total
	2	3, 4 and 5	Ungraded and 1		2	3, 4 and 5	Ungraded and 1	
ESTABLISHMENTS, CAPACITY AND EMPLOYMENT								
<i>September quarter 1994—</i>								
Establishments	9	8	9	26	29	17	21	67
Guest rooms	480	999	237	1,716	1,350	1,810	446	3,606
Bed spaces	1,424	2,625	691	4,740	3,827	5,639	1,262	10,728
Employment (persons)	255	1,117	114	1,486	540	949	268	1,757
<i>September quarter 1995—</i>								
Establishments	8	11	9	28	25	24	21	70
Guest rooms	503	1,109	275	1,887	1,181	2,113	434	3,728
Bed spaces	1,323	3,096	758	5,177	3,382	6,577	1,273	11,232
Employment (persons)	301	1,079	126	1,506	490	1,283	264	2,037
ROOM NIGHTS OCCUPIED								
<i>September quarter 1994</i>	37,412	82,915	18,594	138,921	68,535	120,683	19,315	208,533
<i>1995—</i>								
July	14,519	32,098	7,266	53,883	20,972	49,651	7,103	77,726
August	14,451	32,537	7,601	54,589	19,589	50,184	6,889	76,662
September	12,224	26,448	5,980	44,652	15,288	44,400	5,273	64,961
<i>September quarter 1995</i>	41,194	91,083	20,847	153,124	55,849	144,235	19,265	219,349
ROOM OCCUPANCY RATES (per cent)								
<i>September quarter 1994</i>	84.7	90.2	85.3	88.0	55.2	72.5	47.1	62.9
<i>1995—</i>								
July	93.1	93.4	85.2	92.1	57.3	75.8	52.8	67.3
August	92.7	94.6	89.2	93.3	53.5	76.6	51.2	66.3
September	81.0	79.5	72.5	78.9	43.1	70.0	40.5	58.1
<i>September quarter 1995</i>	89.0	89.3	82.4	88.2	51.4	74.2	48.2	64.0
GUEST NIGHTS								
<i>September quarter 1994</i>	69,459	130,434	32,228	232,121	122,827	218,507	40,715	382,049
<i>1995—</i>								
July	25,055	57,667	12,329	95,051	40,765	96,752	13,915	151,432
August	24,930	56,667	12,936	94,533	35,098	94,287	12,756	142,141
September	20,915	46,613	11,055	78,583	27,484	80,234	9,541	117,259
<i>September quarter 1995</i>	70,900	160,947	36,320	268,167	103,347	271,273	36,212	410,832
BED OCCUPANCY RATES (per cent)								
<i>September quarter 1994</i>	53.0	54.0	50.7	53.2	34.9	42.1	35.1	38.7
<i>1995—</i>								
July	61.1	60.1	52.5	59.2	38.9	47.5	35.3	43.5
August	60.8	59.0	55.1	58.9	33.5	46.2	32.3	40.8
September	52.7	50.2	48.6	50.6	27.1	40.7	25.0	34.8
<i>September quarter 1995</i>	58.3	56.5	52.1	56.3	33.2	44.8	30.9	39.8
GUEST ARRIVALS								
<i>September quarter 1994</i>	24,898	48,861	10,407	84,166	71,835	119,007	24,441	215,283
<i>1995—</i>								
July	7,263	22,475	6,718	36,456	27,384	49,906	8,704	85,994
August	7,473	22,196	6,885	36,554	23,281	52,822	7,736	83,839
September	6,127	20,483	3,629	30,239	16,913	42,503	5,666	65,082
<i>September quarter 1995</i>	20,863	65,154	17,232	103,249	67,578	145,231	22,106	234,915
AVERAGE LENGTH OF STAY (days)								
<i>September quarter 1994</i>	2.8	2.7	3.1	2.8	1.7	1.8	1.7	1.8
<i>September quarter 1995</i>	3.4	2.5	2.1	2.6	1.5	1.9	1.6	1.7
TAKINGS FROM ACCOMMODATION (\$'000)								
<i>September quarter 1994</i>	2,905	8,743	979	12,627	4,123	11,573	1,054	16,750
<i>1995—</i>								
July	1,291	3,827	395	5,513	1,293	4,618	393	6,305
August	1,327	3,928	408	5,663	1,199	5,212	409	6,821
September	1,065	2,873	319	4,257	908	4,413	305	5,626
<i>September quarter 1995</i>	3,683	10,628	1,122	15,433	3,401	14,243	1,108	18,752

TABLE 6B—HOTELS, MOTELS AND GUEST HOUSES WITH FACILITIES BY STAR GRADING,
NORTHERN TERRITORY

Particulars	Licensed hotels with facilities	Motels and guest houses	Star grading					Ungraded	Northern Territory
			1	2	3	4 and 5			
ESTABLISHMENTS, CAPACITY AND EMPLOYMENT									
<i>September quarter 1994—</i>									
Establishments	30	63	15	38	20	5	15	93	
Guest rooms	2,031	3,291	370	1,830	1,822	987	313	5,322	
Bed spaces	5,886	9,582	1,081	5,251	5,494	2,770	872	15,468	
Employment (persons)	2,066	1,177	200	795	918	1,148	182	3,243	
<i>September quarter 1995—</i>									
Establishments	31	67	12	33	29	6	18	98	
Guest rooms	2,044	3,571	244	1,684	2,161	1,061	465	5,615	
Bed spaces	5,837	10,572	707	4,705	6,798	2,875	1,324	16,409	
Employment (persons)	2,226	1,317	183	791	1,082	1,280	207	3,543	
ROOM NIGHTS OCCUPIED									
<i>September quarter 1994</i>	137,369	210,085	20,157	105,947	135,426	68,172	17,752	347,454	
<i>1995—</i>									
July	49,928	81,681	4,566	35,491	56,023	25,726	9,803	131,609	
August	51,943	79,308	4,353	34,040	55,049	27,672	10,137	131,251	
September	42,997	66,616	2,972	27,512	48,275	22,573	8,281	109,613	
<i>September quarter 1995</i>	144,868	227,605	11,891	97,043	159,347	75,971	28,221	372,473	
ROOM OCCUPANCY RATES (per cent)									
<i>September quarter 1994</i>	73.5	69.4	59.2	62.9	80.8	75.1	61.6	71.0	
<i>1995—</i>									
July	78.8	73.8	60.4	68.0	83.6	78.2	68.0	75.6	
August	82.0	71.6	57.5	65.2	82.2	84.1	70.3	75.4	
September	70.1	62.2	40.6	54.5	74.5	70.9	59.4	65.1	
<i>September quarter 1995</i>	77.0	69.3	53.0	62.6	80.1	77.8	66.0	72.1	
GUEST NIGHTS									
<i>September quarter 1994</i>	227,256	386,914	42,956	192,286	244,630	104,311	29,987	614,170	
<i>1995—</i>									
July	87,511	158,972	8,726	65,820	109,467	44,952	17,518	246,483	
August	87,223	149,451	7,861	60,028	104,941	46,013	17,831	236,674	
September	69,111	126,731	5,224	48,399	91,207	35,640	15,372	195,842	
<i>September quarter 1995</i>	243,845	435,154	21,811	174,247	305,615	126,605	50,721	678,999	
BED OCCUPANCY RATES (per cent)									
<i>September quarter 1994</i>	42.0	43.9	43.2	39.8	48.4	40.9	37.4	43.2	
<i>1995—</i>									
July	48.4	48.5	39.8	45.1	51.9	50.4	42.7	48.5	
August	48.2	45.6	35.9	41.2	49.8	51.6	43.4	46.5	
September	39.5	40.0	24.6	34.3	44.7	41.3	38.7	39.8	
<i>September quarter 1995</i>	45.4	44.7	33.5	40.3	48.9	47.9	41.6	45.0	
GUEST ARRIVALS									
<i>September quarter 1994</i>	114,318	185,131	20,003	96,733	107,623	60,245	14,845	299,449	
<i>1995—</i>									
July	44,330	78,120	4,824	34,647	53,049	19,332	10,598	122,450	
August	45,266	75,127	4,322	30,754	54,234	20,784	10,299	120,393	
September	38,286	57,035	2,671	23,040	44,299	18,687	6,624	95,321	
<i>September quarter 1995</i>	127,882	210,282	11,817	88,441	151,582	58,803	27,521	338,164	
AVERAGE LENGTH OF STAY (days)									
<i>September quarter 1994</i>	2.0	2.1	2.1	2.0	2.3	1.7	2.0	2.1	
<i>September quarter 1995</i>	1.9	2.1	1.8	2.0	2.0	2.2	1.8	2.0	
TAKINGS FROM ACCOMMODATION (\$'000)									
<i>September quarter 1994</i>	14,426	14,951	1,087	7,028	11,914	8,402	946	29,377	
<i>1995—</i>									
July	5,855	5,963	242	2,585	4,949	3,496	546	11,818	
August	6,369	6,115	229	2,526	5,168	3,972	589	12,484	
September	4,834	5,049	161	1,973	4,432	2,854	463	9,883	
<i>September quarter 1995</i>	17,058	17,127	632	7,083	14,549	10,323	1,598	34,185	

TABLE 7 — HOTELS, MOTELS AND GUEST HOUSES WITH FACILITIES BY SELECTED LOCAL GOVERNMENT AREAS,
NORTHERN TERRITORY

Particulars	Darwin City (a)	Alice Springs (T)	Katherine (T)	Tennant Creek (T)
ESTABLISHMENTS, CAPACITY AND EMPLOYMENT				
<i>September quarter 1994—</i>				
Establishments	26	22	8	4
Guest rooms	1,716	1,584	475	189
Bed spaces	4,740	4,805	1,325	495
Employment (persons)	1,486	603	231	49
<i>September quarter 1995—</i>				
Establishments	28	23	8	4
Guest rooms	1,887	1,608	491	192
Bed spaces	5,177	4,948	1,415	500
Employment (persons)	1,506	805	262	48
ROOM NIGHTS OCCUPIED				
<i>September quarter 1994</i>	138,921	86,643	30,531	8,420
<i>1995—</i>				
July	53,883	31,778	10,494	3,377
August	54,589	29,694	10,652	3,312
September	44,652	28,206	8,672	2,268
<i>September quarter 1995</i>	153,124	89,678	29,818	8,957
ROOM OCCUPANCY RATES (per cent)				
<i>September quarter 1994</i>	88.0	59.5	69.9	48.4
<i>1995—</i>				
July	92.1	63.7	68.9	56.7
August	93.3	59.6	70.0	55.6
September	78.9	58.5	58.9	39.4
<i>September quarter 1995</i>	88.2	60.6	66.0	50.7
GUEST NIGHTS				
<i>September quarter 1994</i>	232,121	151,425	53,678	15,625
<i>1995—</i>				
July	95,051	58,874	19,849	6,543
August	94,533	52,323	19,411	5,820
September	78,583	49,602	15,409	3,848
<i>September quarter 1995</i>	268,167	160,799	54,669	16,211
BED OCCUPANCY RATES (per cent)				
<i>September quarter 1994</i>	53.2	34.3	44.0	34.3
<i>1995—</i>				
July	59.2	38.4	45.3	42.2
August	58.9	34.1	44.3	37.5
September	50.6	33.4	36.3	25.7
<i>September quarter 1995</i>	56.3	35.3	42.0	35.2
GUEST ARRIVALS				
<i>September quarter 1994</i>	84,166	75,039	32,466	14,069
<i>1995—</i>				
July	36,456	24,864	12,030	5,806
August	36,554	23,933	12,122	5,161
September	30,239	20,339	9,631	3,328
<i>September quarter 1995</i>	103,249	69,136	33,783	14,295
AVERAGE LENGTH OF STAY (days)				
<i>September quarter 1994</i>	2.8	2.0	1.7	1.1
<i>September quarter 1995</i>	2.6	2.3	1.6	1.1
TAKINGS FROM ACCOMMODATION (\$'000)				
<i>September quarter 1994</i>	12,627	5,943	1,621	503
<i>1995—</i>				
July	5,513	2,209	460	199
August	5,663	2,104	546	194
September	4,257	1,952	420	136
<i>September quarter 1995</i>	15,433	6,266	1,426	528

(a) As there are no in-scope establishments outside the Darwin City boundaries, data for Darwin City are the same as for the Darwin Statistical Division.

TABLE 8 — HOLIDAY FLATS, UNITS AND HOUSES BY STATISTICAL DIVISION, NORTHERN TERRITORY (a)

Particulars	Darwin (SD)	Northern Territory - Balance (SD)	Northern Territory
LETTING ENTITIES, CAPACITY AND EMPLOYMENT			
September quarter 1994			
Letting entities	7	3	10
Flats, units and houses			
Single bedroom	n.p.	n.p.	166
Multiple bedroom	n.p.	n.p.	152
Total flats, units and houses	n.p.	n.p.	318
Bed spaces	n.p.	n.p.	1,224
Employment (persons) (b)	n.p.	n.p.	70
September quarter 1995			
Letting entities	8	2	10
Flats, units and houses			
Single bedroom	n.p.	n.p.	145
Multiple bedroom	n.p.	n.p.	145
Total flats, units and houses	n.p.	n.p.	290
Bed spaces	n.p.	n.p.	1,147
Employment (persons) (b)	n.p.	n.p.	64
UNIT NIGHTS OCCUPIED			
September quarter 1994	n.p.	n.p.	24,344
1995			
July	n.p.	n.p.	7,950
August	n.p.	n.p.	7,890
September	n.p.	n.p.	6,376
September quarter 1995	n.p.	n.p.	22,216
UNIT OCCUPANCY RATES (per cent)			
September quarter 1994	n.p.	n.p.	83.2
1995			
July	n.p.	n.p.	88.4
August	n.p.	n.p.	87.8
September	n.p.	n.p.	73.3
September quarter 1995	n.p.	n.p.	83.3
UNIT LETTINGS			
September quarter 1994	n.p.	n.p.	6,280
1995—			
July	n.p.	n.p.	1,936
August	n.p.	n.p.	1,946
September	n.p.	n.p.	1,314
September quarter 1995	n.p.	n.p.	5,196
AVERAGE LENGTH OF STAY (days)			
September quarter 1994	n.p.	n.p.	3.9
1995—			
July	n.p.	n.p.	4.1
August	n.p.	n.p.	4.1
September	n.p.	n.p.	4.9
September quarter 1995	n.p.	n.p.	4.3
TAKINGS FROM ACCOMMODATION (\$'000)			
September quarter 1994	n.p.	n.p.	2,097
1995—			
July	n.p.	n.p.	653
August	n.p.	n.p.	706
September	n.p.	n.p.	582
September quarter 1995	n.p.	n.p.	1,941

(a) From December quarter 1994 and June quarter 1995 respectively, some accommodation previously classified as holiday flats and units has been included as motel accommodation. (b) Employment numbers exclude real estate agents and their employees.

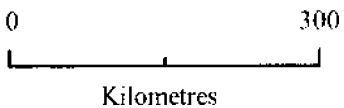
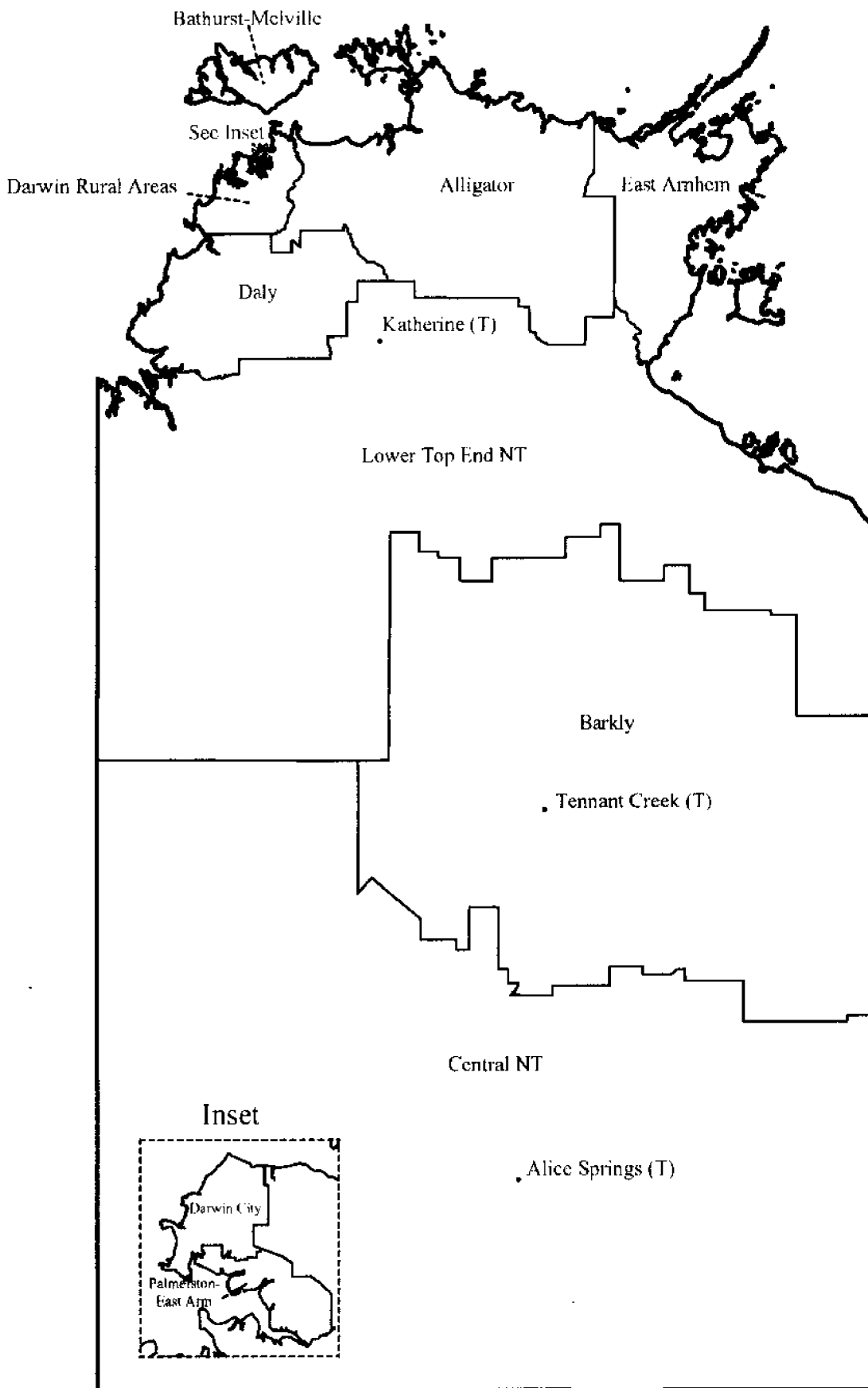
TABLE 9 — CARAVAN PARKS BY STATISTICAL AREA AND TYPE, NORTHERN TERRITORY

Particulars	Darwin (SD) and Alligator (SSD)	Darwin Rural Lower Top End Northern Territory (SSD)	Lower Top End Northern Territory (SSD)	Barkly (SSD)	Central Northern Territory (SSD)	Northern Territory		Total
						Short-term parks	Long-term parks	
ESTABLISHMENTS, CAPACITY AND EMPLOYMENT								
<i>September quarter 1994</i>								
Establishments	10	21	23	10	19	63	20	83
Capacity								
On-site vans	27	162	13	21	98	112	209	321
Other powered sites	1,247	813	911	350	1,225	2,989	1,557	4,546
Unpowered sites	568	503	880	391	1,732	3,452	622	4,074
Cabins, flats, etc.	41	63	38	28	87	183	74	257
<i>Total capacity</i>	<i>1,883</i>	<i>1,541</i>	<i>1,842</i>	<i>790</i>	<i>3,142</i>	<i>6,736</i>	<i>2,462</i>	<i>9,198</i>
Sites occupied by long-term guests	361	325	93	21	331	302	829	1,131
Other sites permanently reserved	—	3	—	—	2	1	4	5
Employment (persons)	52	65	107	38	76	269	69	338
<i>September quarter 1995—</i>								
Establishments	9	22	22	9	16	60	18	78
Capacity								
On-site vans	27	170	12	21	91	123	198	321
Other powered sites	1,239	841	831	341	1,190	2,886	1,556	4,442
Unpowered sites	575	529	974	383	1,522	3,337	646	3,983
Cabins, flats, etc.	30	87	54	28	80	194	85	279
<i>Total capacity</i>	<i>1,871</i>	<i>1,627</i>	<i>1,871</i>	<i>773</i>	<i>2,883</i>	<i>6,540</i>	<i>2,485</i>	<i>9,025</i>
Sites occupied by long-term guests	317	304	82	25	270	296	702	998
Other sites permanently reserved	—	1	—	2	2	4	1	5
Employment (persons)	52	75	129	55	95	328	78	406
SITE NIGHTS OCCUPIED								
<i>September quarter 1994</i>	<i>96,211</i>	<i>58,019</i>	<i>64,947</i>	<i>22,465</i>	<i>124,521</i>	<i>250,668</i>	<i>115,495</i>	<i>366,163</i>
<i>1995</i>								
July	38,161	24,279	24,031	8,599	41,980	95,414	41,636	137,050
August	32,508	21,487	19,820	7,580	32,892	75,881	38,406	114,287
September	21,649	15,483	11,910	4,889	31,768	53,961	31,738	85,699
<i>September quarter 1995</i>	<i>92,318</i>	<i>61,249</i>	<i>55,761</i>	<i>21,068</i>	<i>106,640</i>	<i>225,256</i>	<i>111,780</i>	<i>337,036</i>
SITE OCCUPANCY RATES (per cent)								
<i>September quarter 1994</i>	<i>55.5</i>	<i>41.1</i>	<i>38.3</i>	<i>30.9</i>	<i>43.1</i>	<i>40.5</i>	<i>51.0</i>	<i>43.3</i>
<i>1995</i>								
July	65.8	48.1	41.4	35.9	47.0	47.1	54.0	49.0
August	56.0	42.6	34.2	31.6	36.8	37.4	49.9	40.8
September	38.6	31.7	21.2	21.1	36.7	27.5	42.6	31.7
<i>September quarter 1995</i>	<i>53.6</i>	<i>40.9</i>	<i>32.4</i>	<i>29.6</i>	<i>40.2</i>	<i>37.4</i>	<i>48.9</i>	<i>40.6</i>
TAKINGS FROM ACCOMMODATION (\$'000)								
<i>September quarter 1994</i>	<i>890</i>	<i>723</i>	<i>852</i>	<i>328</i>	<i>1,942</i>	<i>3,498</i>	<i>1,238</i>	<i>4,735</i>
<i>1995</i>								
July	377	327	399	142	758	1,521	482	2,003
August	313	269	335	113	564	1,162	431	1,593
September	208	193	205	76	530	869	341	1,211
<i>September quarter 1995</i>	<i>898</i>	<i>788</i>	<i>939</i>	<i>330</i>	<i>1,852</i>	<i>3,553</i>	<i>1,254</i>	<i>4,807</i>

TABLE 10 — VISITOR HOSTELS BY STATISTICAL DIVISION AND SELECTED AREAS, NORTHERN TERRITORY

Particulars	Northern Territory - Balance (SD)					Northern Territory
	Darwin (SD)	Katherine (T)	Alice Springs (T)	Balance	Total	
ESTABLISHMENTS, CAPACITY AND EMPLOYMENT						
<i>September quarter 1994</i> —						
Establishments	12	3	7	13	23	35
Bed spaces	1,046	199	807	742	1,748	2,794
Employment (persons)	61	11	37	40	88	149
<i>September quarter 1995</i> —						
Establishments	11	3	7	13	23	34
Bed spaces	1,139	187	800	827	1,814	2,953
Employment (persons)	66	10	44	51	105	171
GUEST NIGHTS						
<i>September quarter 1994</i>	68,788	12,134	41,724	34,453	88,311	157,099
<i>1995</i> —						
July	28,903	4,586	14,727	14,395	33,708	62,611
August	27,827	4,263	12,873	14,195	31,331	59,158
September	23,180	3,698	11,889	9,675	25,262	48,442
<i>September quarter 1995</i>	79,910	12,547	39,489	38,265	90,301	170,211
BED OCCUPANCY RATES (per cent)						
<i>September quarter 1994</i>	71.5	66.3	56.2	52.5	55.8	61.8
<i>1995</i> —						
July	81.9	79.1	59.4	56.1	59.9	68.4
August	78.8	73.5	51.9	55.4	55.7	64.6
September	69.4	65.9	49.5	39.0	46.4	55.2
<i>September quarter 1995</i>	76.8	72.9	53.7	50.3	54.1	62.8
GUEST ARRIVALS						
<i>September quarter 1994</i>	22,031	5,949	17,445	21,964	45,358	67,389
<i>1995</i> —						
July	11,230	2,535	7,331	12,706	22,572	33,802
August	11,148	2,393	6,497	12,472	21,362	32,510
September	9,174	2,062	6,041	8,559	16,662	25,836
<i>September quarter 1995</i>	31,552	6,990	19,869	33,737	60,596	92,148
AVERAGE LENGTH OF STAY (days)						
<i>September quarter 1994</i>	3.1	2.0	2.4	1.6	1.9	2.3
<i>1995</i> —						
July	2.6	1.8	2.0	1.1	1.5	1.9
August	2.5	1.8	2.0	1.1	1.5	1.8
September	2.5	1.8	2.0	1.1	1.5	1.9
<i>September quarter 1995</i>	2.5	1.8	2.0	1.1	1.5	1.8
TAKINGS FROM ACCOMMODATION (\$'000)						
<i>September quarter 1994</i>	814	155	418	577	1,150	1,964
<i>1995</i> —						
July	353	62	171	254	487	840
August	343	57	146	253	456	799
September	271	52	139	174	365	636
<i>September quarter 1995</i>	967	171	456	681	1,307	2,274

Northern Territory Statistical Subdivisions



EXPLANATORY NOTES

INTRODUCTION

1 This publication contains data for the Northern Territory from a quarterly survey of tourist accommodation establishments.

SCOPE

2 Tourist accommodation establishments currently included in the survey comprise two groups:

- Establishments which provide predominantly short-term accommodation (i.e. for periods of less than 2 months) to the general public. These include:
 - *Hotels, motels and guest houses, with facilities* being hotels licensed to operate a public bar and motels, private hotels and guest houses all of which provide a bath (or shower) and toilet in most guest rooms and have breakfast available for guests. NOTE: From December quarter 1993, hotel, motel and guest house establishments with fewer than five rooms have been formally excluded from the scope of this statistical collection.
 - *Holiday flats, units and houses* (excluding establishments predominantly operated on a time share basis) which are operated by owners, managers or real estate agents who have sole letting rights to at least five flats, units or houses for short-term letting. They are mainly self-contained in terms of cooking, bath (or shower) and toilet facilities and do not have breakfast available for guests. Data for holiday flats, units and houses include short-term owner occupation as well as paying guest occupation.
 - *Visitor hostels* which provide accommodation to visitors on a bed basis (rather than by the room). This category does not include establishments providing charity type accommodation (e.g. Salvation Army hostels) nor hotels, motels and guest houses without in-room facilities which provide accommodation on a per room basis.
 - *Caravan parks* which provide either predominantly short-term (i.e. for periods of less than 2 months) or predominantly long-term (i.e. for periods of 2 months or more) accommodation to the general public and which provide powered sites for caravans and toilet, shower and laundry facilities for guests.

3 Data collected and published for each type of establishment (other than holiday flats, units and houses) include both long-term and short-term guests at these establishments.

4 Establishments which provide more than one type of accommodation (e.g. a motel with attached caravan park) are treated as two or more separate establishments. However, self-contained units, flats, cabins, etc. attached to hotels, motels or to caravan parks are included in the capacity for those establishments and not treated as separate holiday flat, unit or house establishments.

AUSTRALIAN STANDARD GEOGRAPHICAL CLASSIFICATION

5 Statistics presented in this publication have been classified according to the Australian Standard Geographic Classification (ASGC), Edition 2.5. This classification incorporates a number of hierarchic structures of geographic areas. The appropriate spatial units of the main structure of the ASGC used in this publication are defined as follows.

EXPLANATORY NOTES

AUSTRALIAN STANDARD
GEOGRAPHICAL CLASSIFICATION
continued

STATISTICAL LOCAL AREAS (SIAs) are legal Local Government Areas or equivalent spatial units which serve as the smallest type of spatial unit considered appropriate for the presentation of statistics and add, without gaps or overlaps, to;

STATISTICAL SUBDIVISIONS (SSDs) which in turn represent another, higher hierarchic level and add, without gaps or overlaps, to;

STATISTICAL DIVISIONS (SDs) which in turn add, without gaps or overlaps, to:
The Northern Territory.

For more detailed information, refer to the ASGC (1216.0).

The Northern Territory comprises three SDs, i.e. Darwin, Northern Territory Balance, and Offshore Areas and Migratory. Only the first two of these units are appropriate for the presentation of statistics in this publication and together add to the Northern Territory.

UNPUBLISHED STATISTICS

6 The ABS may make available on request certain unpublished tourist accommodation statistics. A charge may be made for this information.

RELATED PUBLICATIONS

7 Publications for Australia, and each State and Territory, are released by the respective offices of the ABS. Tourist accommodation statistics for past quarters are available on request. Other ABS publications which may be of interest include:

- *Directory of Tourism Statistics* (1130.0) (irregular: first and latest issue; 1991)
- *Overseas Arrivals and Departures, Australia* (3401.0) (monthly)
- *Tourism Indicators, Australia* (8634.0) (quarterly)
- *Tourist Accommodation, Australia* (8635.0) (quarterly)

8 Current publications produced by the ABS are listed in the *Catalogue of Publications and Products* (1101.0). The ABS also issues the *Release Advice* (1105.0) on Tuesdays and Fridays which lists publications to be released in the next few days. Both the *Catalogue* and *Release Advice* are available from any ABS office.

SYMBOLS AND OTHER USAGES

n.a. not available
n.p. not available for publication but included in totals where applicable
r revised
.. not applicable
— nil
(T) Town

9 Where figures have been rounded, discrepancies may occur between totals and the sums of the component items.

GLOSSARY



Average length of stay Average length of stay is expressed in numbers of days and calculated:

- for hotels, motels and guest houses, by dividing *Guest nights* by *Guest arrivals* and
- for holiday flats, units and houses, by dividing *Unit nights occupied* by *Unit lettings*.

Bed spaces Three-quarter beds are counted as one bed space; double beds as two bed spaces. Cots are excluded.

Capacity Capacity in terms of *Guest rooms*, *Bed spaces*, *Holiday units* or *Caravan park sites*, etc. is the maximum number available to accommodate paying guests during the survey period. Capacity closed temporarily for seasonal reasons is included.

Caravan park capacity The total number of *On-site vans*, *Other powered sites*, *Unpowered sites* and *Cabins*, etc.

Employment The number of persons working at accommodation establishments at the end of the survey period (including working proprietors and those working on other than accommodation activities).

Establishments For hotels, motels and guest houses, caravan parks and visitor hostels, the number of establishments within the scope of the survey which operated for any part of the survey period, or which closed temporarily for the quarter for seasonal reasons.

Guest arrivals The total number of paying guests counted only on the first night they stayed at the accommodation establishment.

Letting entities For holiday flats, units and houses, the number of owners, managers or real estate agents within the scope of the survey who operated for any part of the survey period.

Occupancy Occupancy in terms of *Room nights*, *Unit nights* or *Site nights occupied* refers to the total number of nights each guest room, holiday unit or caravan park site, etc. was occupied during the survey period. NOTE: From September quarter 1992, caravan park sites, etc. permanently reserved for 2 months or more at the end of the survey period but only casually occupied by their tenants have been recorded continuously as *Site nights occupied* irrespective of whether the tenants of individual sites were in residence on any particular night.

Occupancy in terms of *Guest nights* refers to the total number of nights each paying guest stayed during the survey period.

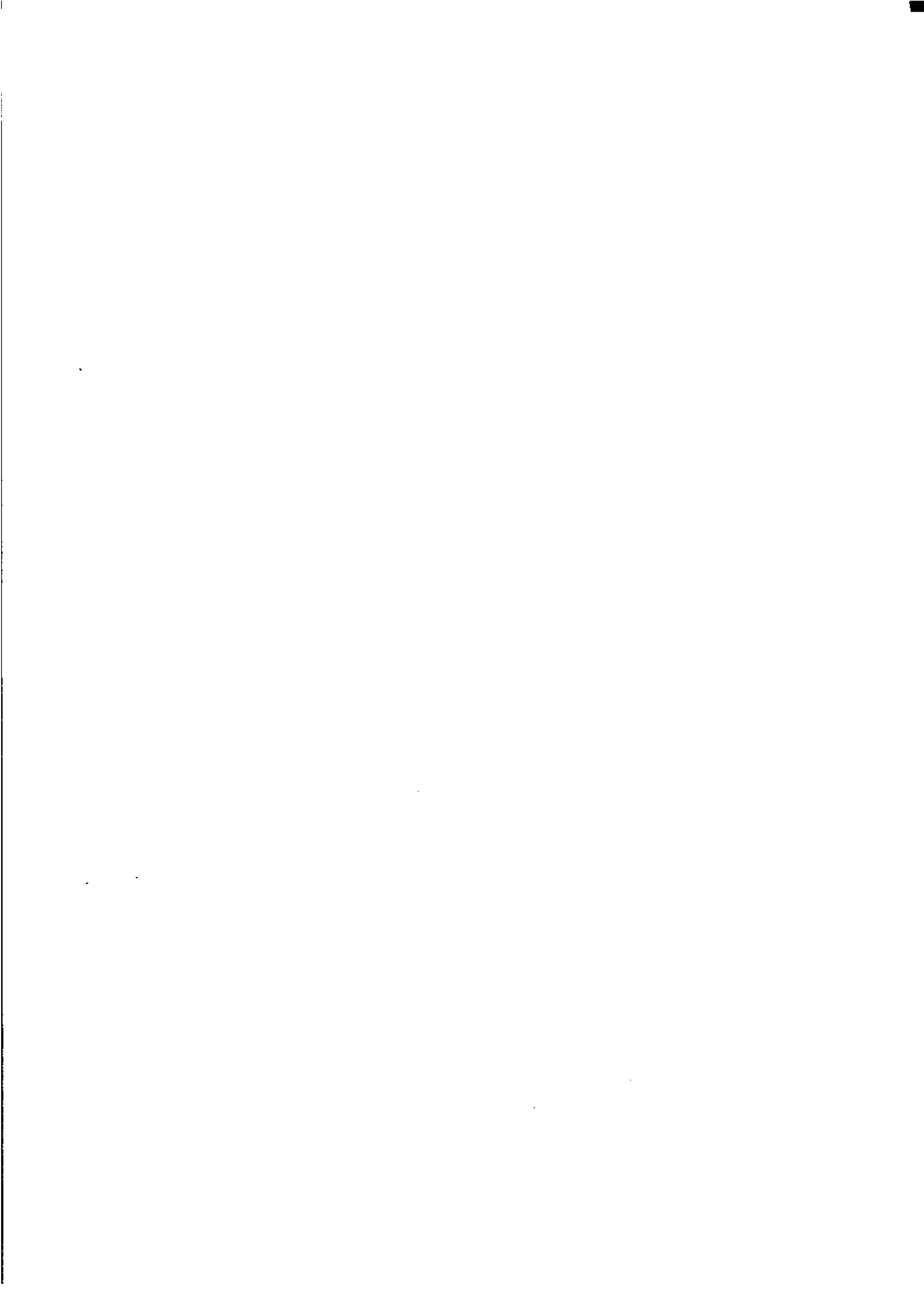
Occupancy rates *Occupancy rates* represent occupancy expressed as a percentage of total capacity available during the survey period, e.g.

$$\text{Room occupancy rate (\%)} \text{ for the period} = \frac{\text{Room nights occupied}}{(\text{Guest rooms}) \times (\text{No. of days in the period})} \times 100$$

providing that, for establishments closing (other than for seasonal reasons) or opening during the survey period, the denominator of the above expression includes only operating periods.

GLOSSARY

Other sites permanently reserved	The total number of powered and unpowered sites, on-site vans and cabins, etc. continuously let for 2 months or more by the end of the survey period to tenants who occupy the sites only on a casual or sporadic basis. Separate data for this item are available only from September quarter 1992.
Room nights available	The number of guest rooms available multiplied by the number of days for which they were available during the survey period. Includes operating periods only for establishments closing (other than for seasonal reasons) or opening during the survey period.
Sites occupied by long-term guests	The total number of sites, etc. occupied at the end of the survey period by guests who have stayed continuously for 2 months or more.
Star grading	The grading of hotels and motels with facilities based on the classification system used by members of the Australian Automobile Association (AAA). The gradings are allocated according to a points system based on the amenities and facilities available to guests. Details of the grading scheme are contained in the RACV-RAASA members' publication <i>Accommodation Australia</i> , or the individual tour guides produced by members of the AAA. For the purpose of classifying establishments to a star grading in this publication, 'half' star gradings are ignored (e.g. a two and a half star grading has been shown as two star).
Takings from accommodation	Revenue received from the provision of accommodation. Takings from meals are excluded. Takings from accommodation for each month generally represent the takings received during that month. Where payments are received in advance of, or after, the provision of accommodation to guests, the monthly figure for takings from accommodation may not necessarily bear a direct relationship to the number of guests accommodated during the month. Rental and storage fees paid to caravan parks for the keeping of private vans in parks are included in the takings of the month they are received.
Unit lettings	The total number of times a holiday flat, unit or house was occupied by a new tenant, counted only on the first night it was occupied by the new tenant.







FOR MORE INFORMATION

The ABS publishes a wide range of information on Australia's economic and social conditions. A catalogue of publications and products is available from any of our offices (see below).

INFORMATION CONSULTANCY SERVICES

Information tailored to special needs of clients can be obtained from the Information Consultancy Service available at ABS Offices (see below).

ABS PRODUCTS

A large number of ABS products is available from the ABS Bookshops (see below). The ABS also provides a subscription service – you can telephone the ABS Subscription Service Australia wide toll free on 1800 0206 08.

ELECTRONIC SERVICES

A large range of data is available via on-line services, diskette, magnetic tape, tape cartridge and CD ROM. For more details about our electronic data services, contact any ABS office (see below) or email us at:

X.400 (C:Australia,PUB:Telememo,O:ABS,FN:STAT,SN:INFO)
Internet Stat.info@abs.telememo.au
Keylink STAT.INFO/ABS

You can visit us on the Internet at: <http://www.statistics.gov.au>

GENERAL SALES AND INQUIRIES

- * Sydney 02 268 4611
 - * Melbourne 03 9615 7755
 - * Brisbane 07 3222 6351
 - * Perth 09 360 5140
 - * Adelaide 08 237 7100
 - * Hobart 002 20 5800
 - * Darwin 089 43 2111
 - * Canberra 06 252 6627
- Information Services, ABS
PO Box 10, Belconnen ACT 2616



2863570009952

ISSN 0157-1354

RRP \$15.00

© Commonwealth of Australia 1995

Produced by the Australian Government Publishing Service